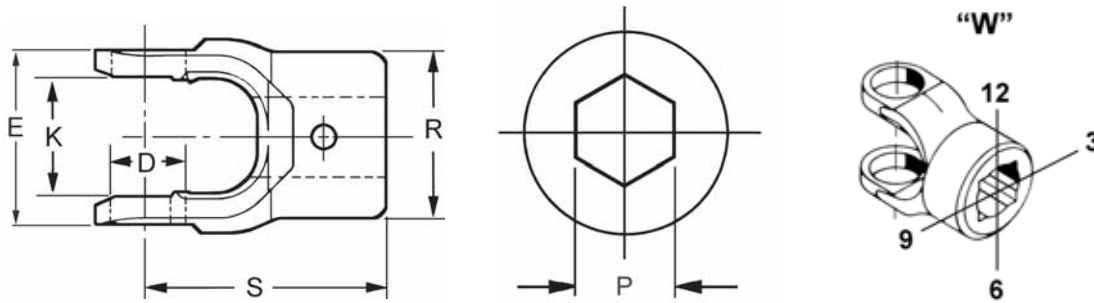
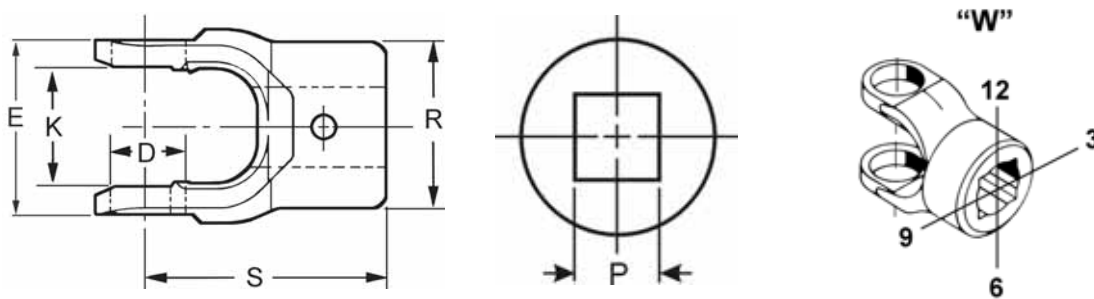


# HEX & SQUARE HOLE



P Hex Hole Diameter	R Ground Hub Diameter	W Set Screw Hole Viewed from Hub End		S Centerline to End of Hub	End Yoke Part Number
		Hole Diameter	Location		
<b>1000 SERIES</b>		<b>K-1.500</b>		<b>D-.938</b>	<b>USE KIT 5-170X</b>
.8750	2.0000	.3750	3	2.5000	10-4-282
1.1250	2.0000	.3750	3	2.5000	10-4-32

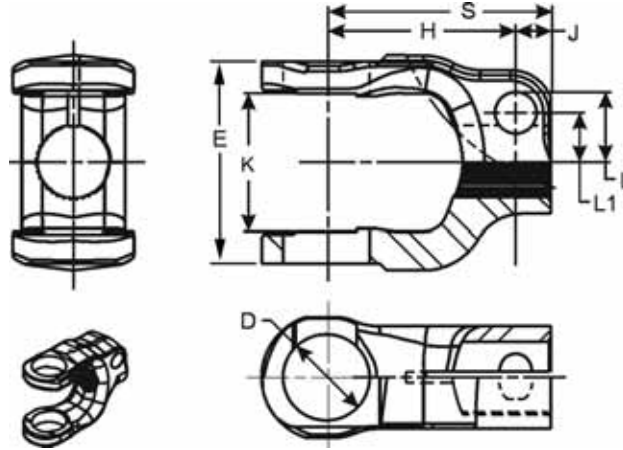


P Hex Hole Diameter	R Ground Hub Diameter	W Set Screw Hole Viewed from Hub End		S Centerline to End of Hub	End Yoke Part Number
		Hole Diameter	Location		
<b>1000 SERIES</b>		<b>K-1.500</b>		<b>D-.938</b>	<b>USE KIT 5-170X</b>
.7500	1.6250	.3750	3	2.5000	10-4-22
.8120	1.9690	.3750	3	2.5000	10-4-42
.8750	1.6250	.3750	3	2.8750	10-4-62
.8750	1.9690	.3750	3	2.5000	10-4-12
1.0000	2.0000	.3750	3	2.5000	10-4-52
<b>1140 SERIES</b>		<b>K-1.812</b>		<b>D-1.062</b>	<b>USE KIT NO. 5-242X</b>
1.0000	—	.3750	—	—	1-4-222
<b>1240 SERIES</b>		<b>E-2.875</b>		<b>D-1.125</b>	<b>USE KIT NO. 5-129X</b>
1.0000	—	.0000	—	—	2-4-152
<b>1440 SERIES</b>		<b>K-2.828</b>		<b>D-1.312</b>	<b>USE KIT NO. 5-431X</b>
1.3120	—	.0000	—	—	3-4-4-82



Important: See Safety Information in General Information Section (J300P-GI)

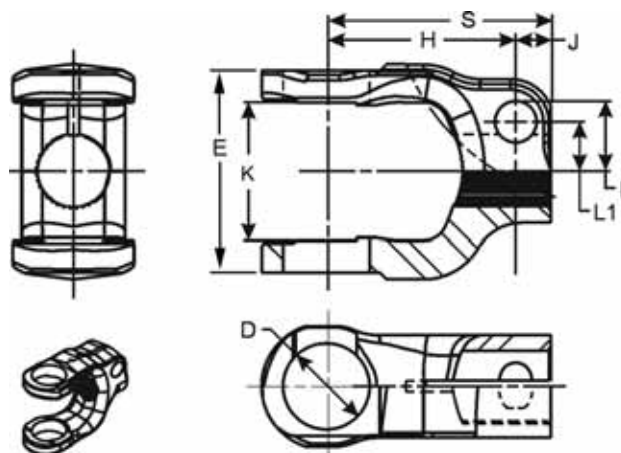
# STEERING SHAFT SERRATED HOLE With Snap Ring Design



Serrated Hole		Bolt Hole Diameter	H	J	L	L1	S	End Yoke Part Number
Major Diameter	Minor Diameter (Nominal)		Center of Bolt Hole to Center of Bearing Hole	Center of Bolt Hole to End of Hub	Top of Bolt Hole to Center of Spline	Center of Bolt Hole to Center of Spline	Centerline to End of Hub	
<b>1000 SERIES</b>			<b>K-1.500</b>	<b>D- .938</b>				<b>USE KIT 5-103X</b>
<b>.7350-16 Based On 36 Spline</b>								
.7350	.6960	.4510	2.1200	.5000	—	.5250	2.6200	10-4-431SX
<b>.7390-21 Based On 36 Spline</b>								
.7390	.6960	.4670	1.7800	.4700	.7480	—	2.2500	10-4-871SX
<b>.7390-26 Based On 36 Spline</b>								
.7390	.6960	.4670	1.7800	.4700	.7260	.5250	2.2500	10-4-611SX
<b>.7390-30 Based On 36 Spline</b>								
.7390	.6960	.4060	2.0300	.4700	—	.4700	2.5000	10-4-931SX
.7390	.6960	.4060	2.0300	.4700	—	.4700	2.5000	10-4-631SX
.7390	.6960	.4060	2.0300	.4700	.6730	—	2.5000	10-4-491SX
<b>.8110-30 Based On 36 Spline</b>								
.8110	.7640	.4050	2.0300	.4700	.7100	—	2.5000	10-4-501SX
.8110	.7640	.4050	2.1200	.5000	.7100	—	2.6200	10-4-901SX
.8110	.7640	.4670	2.0300	.4700	.7700	—	2.5000	10-4-821SX
.8110	.7640	.4670	2.0300	.4700	.7700	—	2.5000	10-4-1001SX
.8110	.7640	.4700	2.0300	.3800	.7700	—	2.4100	10-4-1181SX
<b>.8130-18 Based On 36 Spline</b>								
.8130	.7640	.4510	2.0300	.3800	.7640	—	2.4100	10-4-911SX
.8130	.7640	.4510	2.0300	.4700	.7590	—	2.5000	10-4-841SX
.8130	.7640	.4670	1.7800	.3800	.7610	—	2.1600	10-4-621SX
.8130	.7640	.4670	1.7800	.4700	.7620	—	2.2500	10-4-1281SX
.8130	.7640	.4670	2.3300	.3700	.7610	—	2.7000	10-4-551SX
<b>.8700-14 Based On 36 Spline</b>								
.8700	.8190	.4510	2.0310	.4700	.7810	—	2.5000	10-4-1061SX
<b>.8700-30 Based On 36 Spline</b>								
.8700	.8190	.4030	2.0310	.4690	.7480	—	2.5000	10-4-601SX
.8700	.8190	.4050	2.0310	.4690	.7380	—	2.5000	10-4-951SX
.8700	.8190	.4510	2.0310	.5300	.7890	—	2.2800	10-4-1241SX
.8700	.8190	.4670	2.0310	.4690	.8150	—	2.5000	10-4-741SX
.8700	.8190	.4670	2.0310	.4700	.7800	—	2.5000	10-4-991SX
.8700	.8190	.4670	2.0310	.4700	.7870	—	2.5000	10-4-461SX
<b>.9900-14 Based On 36 Spline</b>								
.9900	.9470	.4510	2.0300	.4700	.8520	—	2.5000	10-4-851SX



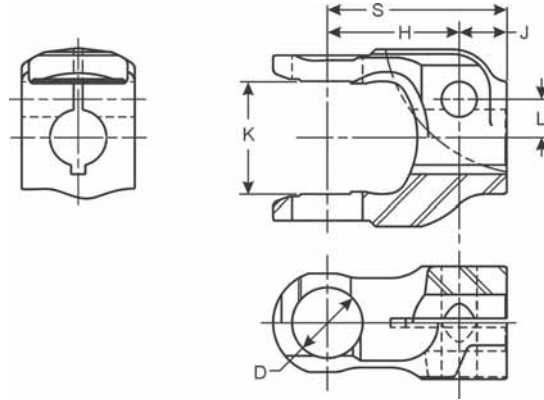
# STEERING SHAFT SERRATED HOLE With Snap Ring Design



Serrated Hole		Bolt Hole Diameter	H	J	L	L1	S	End Yoke Part Number
Major Diameter	Minor Diameter (Nominal)		Center of Bolt Hole to Center of Bearing Hole	Center of Bolt Hole to End of Hub	Top of Bolt Hole to Center of Spline	Center of Bolt Hole to Center of Spline	Centerline to End of Hub	
<b>1000 SERIES (Continued)</b>			<b>K-1.500</b>	<b>D- .938</b>	<b>USE KIT 5-103X</b>			
<b>.9940-30 Based On 36 Spline</b>								
.9940	.9470	.4050	1.7500	.6300	.8020	—	2.3800	10-4-391SX
.9940	.9470	.4050	1.7800	.4700	.8020	—	2.2500	10-4-121SX
.9940	.9470	.4050	1.7800	.4700	.8020	—	2.2500	10-4-561SX
.9940	.9470	.4050	2.0300	.4700	.8020	—	2.5000	10-4-371SX
.9940	.9470	.4050	2.0300	.4700	.8020	—	2.5000	10-4-961SX
.9940	.9470	.4510	2.0300	.4700	.8630	—	2.5000	10-4-451SX
.9940	.9470	.4510	2.0300	.4700	.8630	—	2.5000	10-4-971SX
.9940	.9470	.4510	4.0000	.4700	.8630	—	4.4700	10-4-1201SX
.9940	.9470	.4670	2.0300	.4700	.8350	—	2.5000	10-4-731SX
<b>1.0060-34 Based On 48 Spline</b>								
1.0060	.9600	.4680	2.0300	.4700	—	.6300	2.5000	10-4-661SX
<b>1310 SERIES</b>			<b>E-3.469</b>	<b>D-1.062</b>	<b>USE KIT 5-251X</b>			
<b>.8700-36 Involute Spline</b>								
.8700		.4060	2.1200	.9400	—	.5350	2.5620	2-4-8061SX
<b>1.0000-30 Based On 36 Spline</b>								
1.0000	.9470	4.5000	2.1200	.7600	—	.6100	2.8800	2-4-4411SX
<b>1.0000-36 Spline</b>								
1.0000	.9470	.4060	2.1250	.4370	—	.6100	2.5620	2-4-4461SX

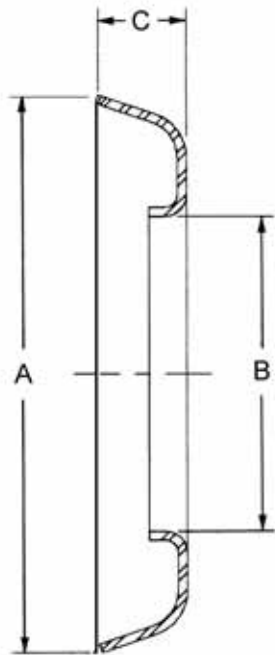


# STEERING SHAFT STRAIGHT ROUND HOLE With Snap Ring Design

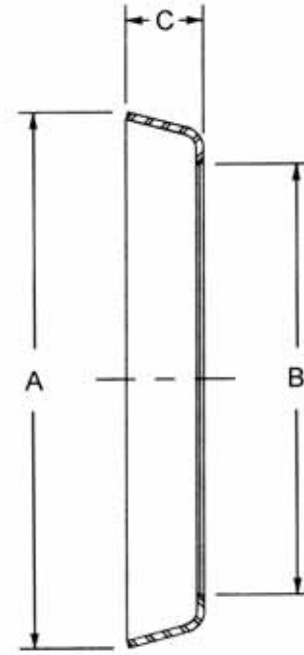


STRAIGHT ROUND HOLE		Bolt Hole Diameter	H	J	L	S	End Yoke Part Number
Hole Size Max./Min.	Keyway Width		Center of Bolt Hole to Center of Bearing Hole	Center of Bolt Hole to End of Hub	Center of Bolt Hole to Center of Hub Hole	Centerline to End of Hub	
<b>1000 SERIES</b>		<b>K-1.500</b>	<b>D-.938</b>	<b>USE KIT 5-103X</b>			
.7510/.7500	.1880	.4690	1.7500	.6250	.5100	2.3750	10-4-1673SX
.9860/.9850	.1880	.4670	1.7500	.6250	.5600	2.3750	10-4-1083SX
1.0005/.9995	.1880	.4060	1.6250	.7500	.5570	2.3750	10-4-1183SX





Style 1

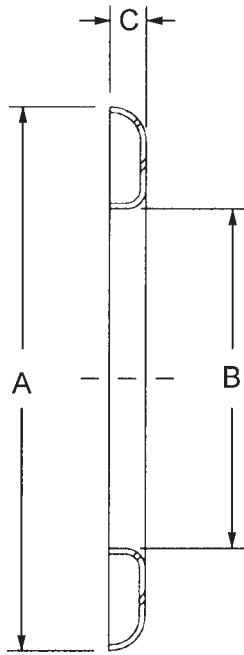


Style 2

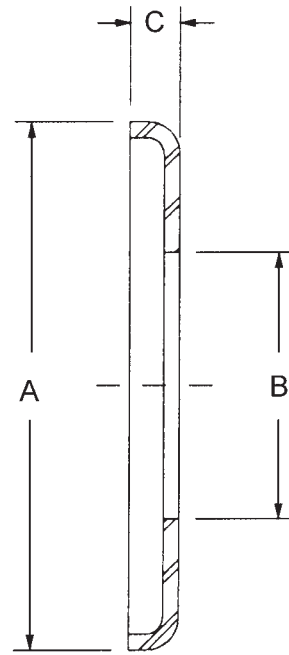
Slinger Number	Style	A	B	C
98-1361	1	4.812	2.953	.812
98-1362	1	5.719	2.938	.875
230118	1	4.000	2.062	.562
230124	1	4.134	2.308	.560
230421	1	3.938	2.188	.531
230674	1	6.125	3.516	.750
230795	1	5.453	3.938	.656
230909	1	4.625	2.938	.312
230921	1	7.000	3.141	.812
231004	1	3.656	2.141	.438
231022	1	4.891	3.000	.688
231101	1	6.000	2.938	.938
231102	1	4.891	3.141	.938
231179	1	5.750	3.391	.938
231206	1	4.812	2.500	1.000
231263	1	5.656	3.391	.609
231302	1	3.078	1.859	.422
231347	1	5.672	3.031	.469
231357	1	5.000	3.109	.750
231359	1	6.000	3.125	.812

Slinger Number	Style	A	B	C
231541	1	4.688	2.954	.500
231599	1	6.750	3.391	1.500
231615	1	7.406	3.109	.750
231780	1	3.438	1.609	.344
231803	1	7.000	3.484	.891
231959	1	4.891	3.000	.562
232055	1	5.359	3.250	1.375
232189	1	5.000	3.109	.750
31875	1	4.125	1.562	.406
230998	2	4.250	3.500	.625
231047	2	4.891	3.500	.750
231745	2	7.000	3.750	.719
231866	2	6.000	3.500	.812





**Style 3**



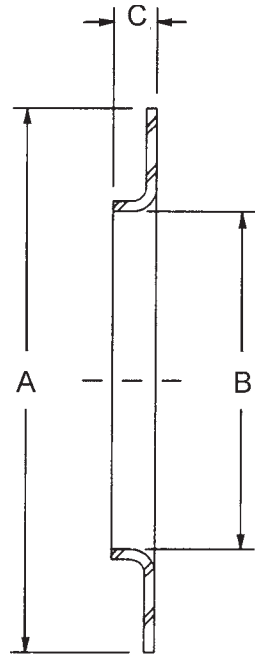
**Style 4**

Slinger Number	Style	A	B	C
<b>565-W</b>	3	4.438	2.500	.531
<b>15099</b>	3	2.125	1.562	.219
<b>230746</b>	3	4.625	2.391	.875
<b>230888</b>	3	5.650	4.250	.656
<b>230910</b>	3	4.625	2.938	.312
<b>230991</b>	3	5.438	3.938	.656
<b>231028</b>	3	4.328	3.000	.938
<b>231620</b>	3	3.812	3.031	.266
<b>231877</b>	3	2.531	1.500	.547
<b>232039</b>	3	4.062	2.766	1.125
<b>232042-1</b>	3	4.500	2.375	.797
<b>232042-10</b>	3	5.797	3.375	.406
<b>232042-11</b>	3	5.406	3.375	.406
<b>232042-2</b>	3	4.906	2.625	.500
<b>232042-3</b>	3	5.109	3.000	.297

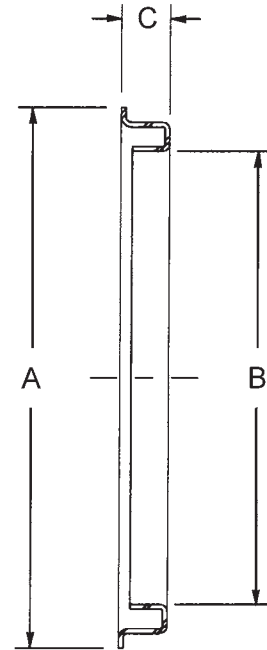
Slinger Number	Style	A	B	C
<b>232042-6</b>	3	5.297	3.125	.500
<b>232193</b>	3	6.438	4.016	.500
<b>232367</b>	3	4.000	3.000	.812
<b>232372</b>	3	4.688	3.109	1.675
<b>330851</b>	3	2.844	1.562	.406
<b>34592</b>	3	2.438	1.875	.219
<b>41498</b>	3	2.125	1.603	.219
<b>230859</b>	4	4.750	2.938	.312
<b>230902</b>	4	5.720	4.067	.920
<b>232002</b>	4	6.000	3.141	.375
<b>232027</b>	4	6.000	3.141	.359



# SLINGER STYLES



**Style 5**

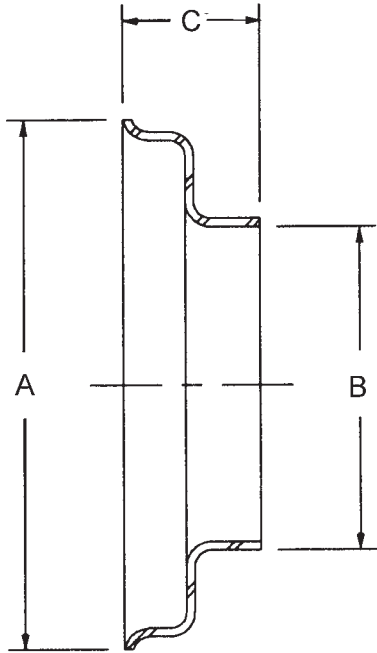


**Style 6**

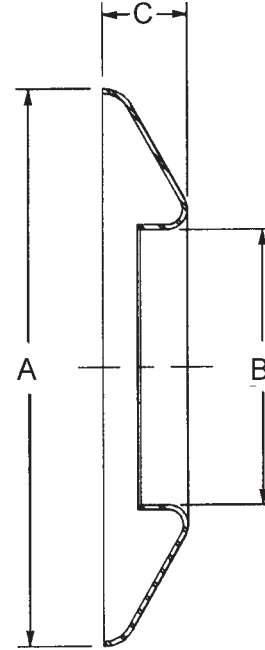
Slinger Number	Style	A	B	C
<b>230794</b>	5	4.750	2.938	.312
<b>232182</b>	5	6.000	3.141	.375
<b>42779</b>	5	3.125	2.188	.340
<b>231579</b>	6	2.500	2.281	.547
<b>231596</b>	6	2.938	1.578	.438
<b>231616</b>	6	4.594	3.844	.422
<b>231750</b>	6	3.954	3.031	.375
<b>231755</b>	6	3.954	3.062	.562
<b>232032</b>	6	4.016	2.438	.438
<b>232166</b>	6	3.425	3.156	.781

Slinger Number	Style	A	B	C
<b>232168</b>	6	3.766	3.000	.641
<b>232511</b>	6	5.000	3.125	.350
<b>232514</b>	6	4.125	2.750	.390
<b>232609</b>	6	3.820	3.000	1.260





**Style 7**



**Style 8**

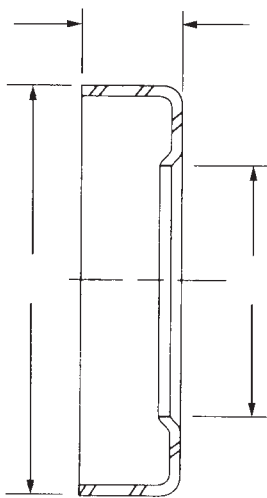
Slinger Number	Style	A	B	C
<b>829W</b>	7	4.375	3.062	.625
<b>1015W</b>	7	3.438	2.766	.750
<b>98-1473</b>	7	2.266	1.781	.500
<b>230386</b>	7	3.562	2.375	1.250
<b>230587</b>	7	3.562	2.500	.812
<b>230629</b>	7	3.375	2.031	.719
<b>230865</b>	7	3.281	2.188	.562
<b>230881</b>	7	2.750	1.781	.500
<b>230897</b>	7	4.000	2.688	.594
<b>231015</b>	7	4.797	2.969	.562
<b>231356</b>	7	3.734	2.281	.797
<b>231366</b>	7	4.672	2.844	.891
<b>231549</b>	7	2.266	1.781	.500
<b>231550</b>	7	4.766	2.750	1.406
<b>231636</b>	7	3.000	2.281	.578
<b>232037</b>	7	4.234	2.750	.781
<b>30287</b>	7	4.562	2.766	.891
<b>330499</b>	7	5.000	3.062	.812
<b>41195</b>	8	2.891	1.891	.422
<b>230207</b>	8	4.375	2.531	.875

Slinger Number	Style	A	B	C
<b>230895</b>	8	4.625	2.391	.875
<b>230900</b>	8	5.500	2.766	.844
<b>230909</b>	8	4.312	2.625	.625
<b>231058</b>	8	6.125	4.016	.859
<b>231872</b>	8	3.469	2.562	.625
<b>231935</b>	8	2.875	1.188	.375
<b>232189</b>	8	5.000	3.109	.950
<b>232198</b>	8	3.312	2.469	.562
<b>232199</b>	8	3.656	3.094	.625
<b>232200</b>	8	3.828	3.094	.562
<b>232201</b>	8	4.812	3.594	1.000

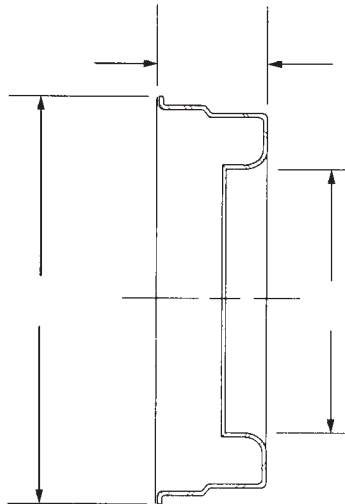




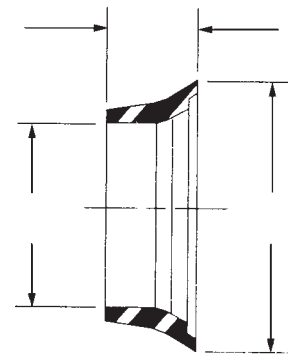
# SLINGER STYLES



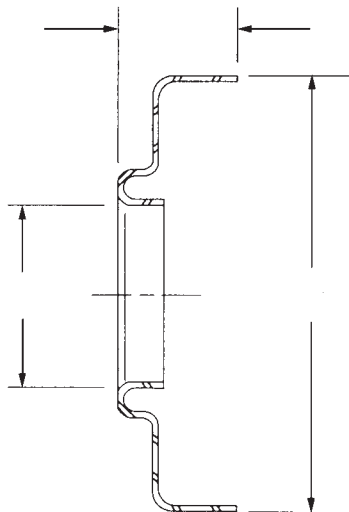
**Style 9**



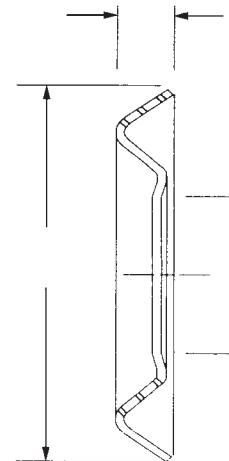
**Style 10**



**Style 11**



**Style 12**



**Style 13**

Slinger Number	Style	A	B	C
231013	9	5.125	3.438	1.125
232167	10	4.344	2.750	1.000
232604	10	4.781	3.000	1.070

Slinger Number	Style	A	B	C
42735	11	2.180	1.535	.729
42501	12	5.120	1.875	.793
30798	13	3.812	1.875	.312

